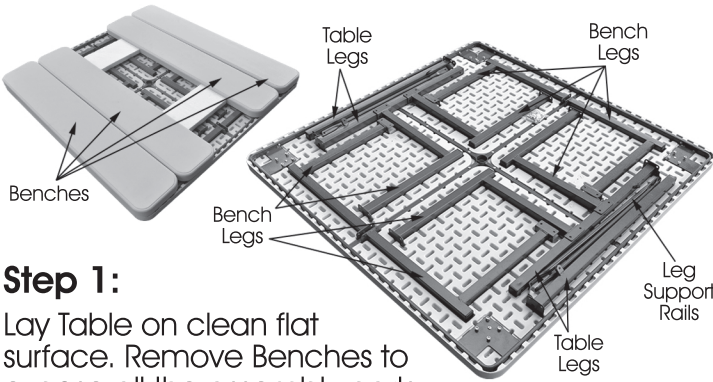


48" Square Picnic Table Assembly with 78" Overall Footprint

Item # PIC784

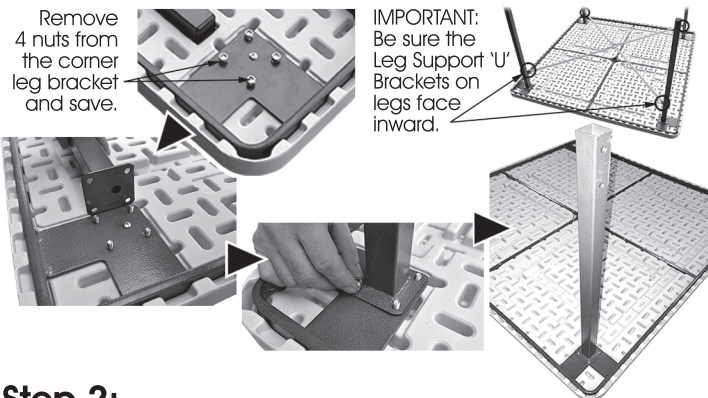
Parts Include:

- 1- 48" Square Table
- 2- Table Legs (4)
- 3- Leg Support Rails (4)
- 4- 48" Benches (4)
- 5- Bench Legs (8)
- 6- 6*40 Long Hex Bolts (8)
- 7- 6*16 Short Pole Bolts (8)
- 8- 6*5.5 Locknuts (64)



Step 1:

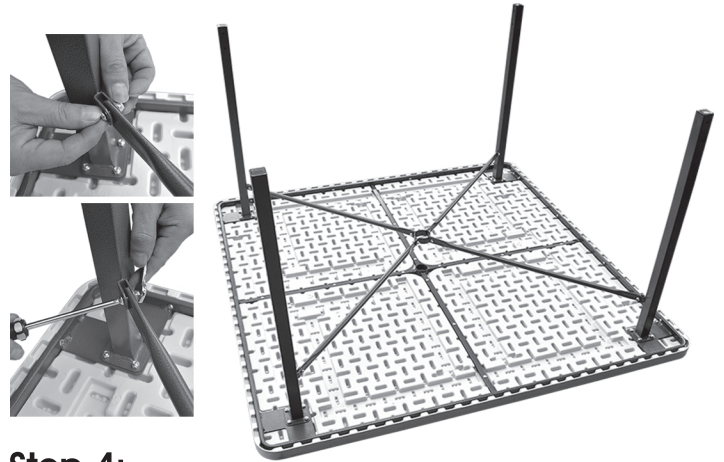
Lay Table on clean flat surface. Remove Benches to expose all the assembly parts and hardware bag. Unload these parts and begin assembly.



Step 2:

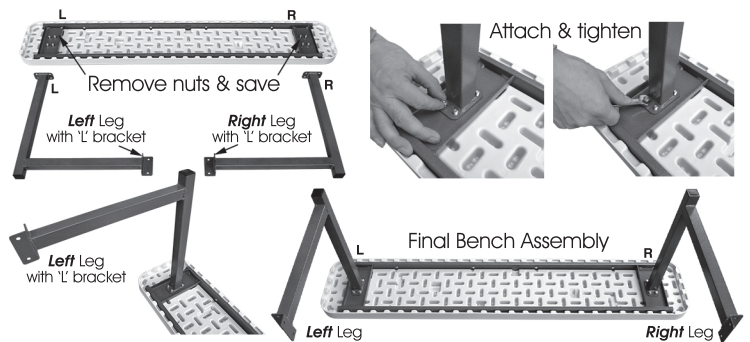
Unscrew the nuts from the corner bracket under the Table top. Position a table leg onto these bolts and secure by using those four nuts. Make sure that the welded 'U' Bracket faces the center of the table.

Repeat step for the remaining table legs.



Step 4:

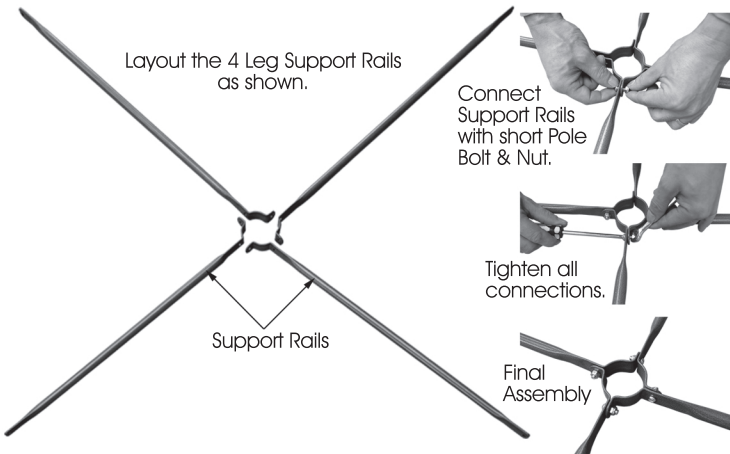
Attach the ends of the Leg Support Assembly to the 'U' Brackets on each leg using the short Hex Bolts and Locknuts.



Step 5:

Unscrew the nuts from the leg brackets under the Bench ends. Position a Bench leg onto these bolts (*match the L's & R's*) and secure by using the saved nuts. Repeat on the other end of the Bench.

Repeat step for the remaining benches.



Step 3:

Lay the Support Rails out on the floor as shown above. Using 4 of the short Hex Bolts and Locknuts, connect the Support Rails. Before tightening, make sure the assembly is flat. Then tighten all the nuts.



Step 6:

Table and Benches should now be upright.

Align the holes in the 'L' Bracket of the **left** Bench Leg with the holes at the bottom of a Table Leg. Then position the 'L' Bracket of the **right** Bench Leg of another Bench on the same Table Leg. Secure in place with a couple Long Hex Bolts and Locknuts. Repeat step for the remaining benches.