

Assembly Instructions

Heavy Duty, Platform Folding Chair Dolly

Item 710CC

Parts Listing

A - Main Frame w/pre-welded Brackets
1 Piece



B - Handle Bar
1 Piece



C - Load Stabilizer
2 Pieces



1/4" x 3/4" Bolt
6 Pieces



5/16" x 1/2" Bolt & Hex Nut
16 Sets



SW - Swivel Wheel Assembly w/Brake
2 Pieces

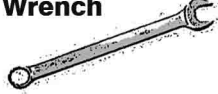


FW - Fixed Wheel Assembly
2 Pieces



Required Tools

7/16" and 1/2" Wrench



Adjustable Wrench



Step 1

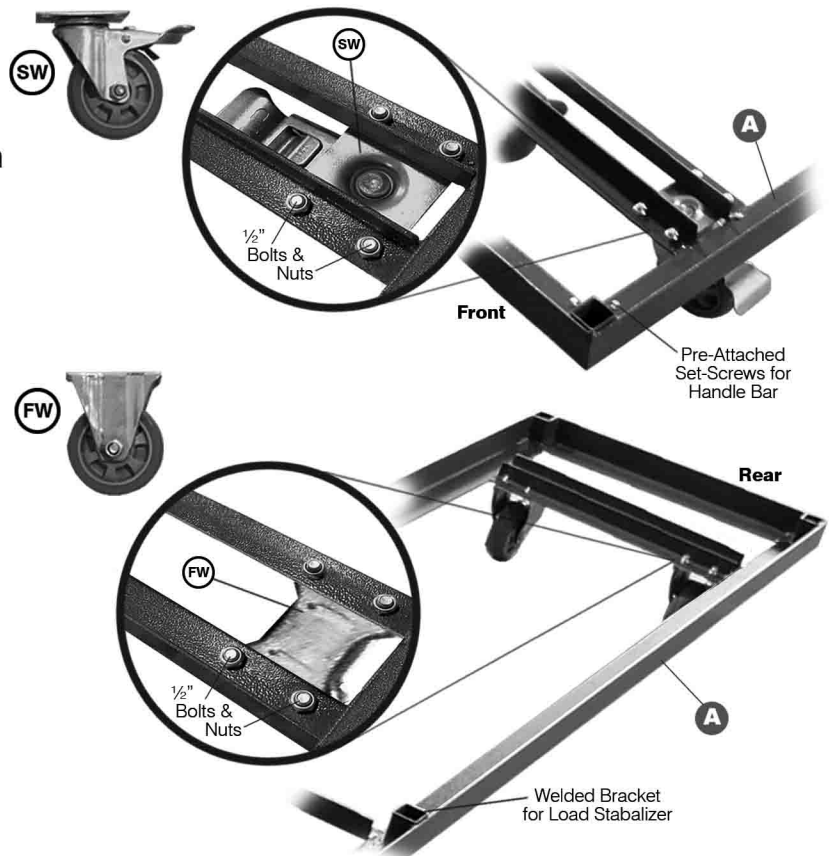
Using four 1/2" Bolts and Hex Nuts per wheel, attach the two Swivel Wheels (SW) to the bottom of the *welded wheel brackets* at the front of the Main Frame (A).

Note: The front end of the Main Frame (A) can be determined by the pre-attached set-screws in the Handle Bar bracket.

Important: Swivel Wheel (SW) must be locked before assembly.

Continue **Step 1** by attaching the two Fixed Wheels (FW) to the Rear End of the Main Frame (A).

Tighten all Hex Nuts securely.



Assembly Instructions (Continued)

Heavy Duty, Platform Folding Chair Dolly

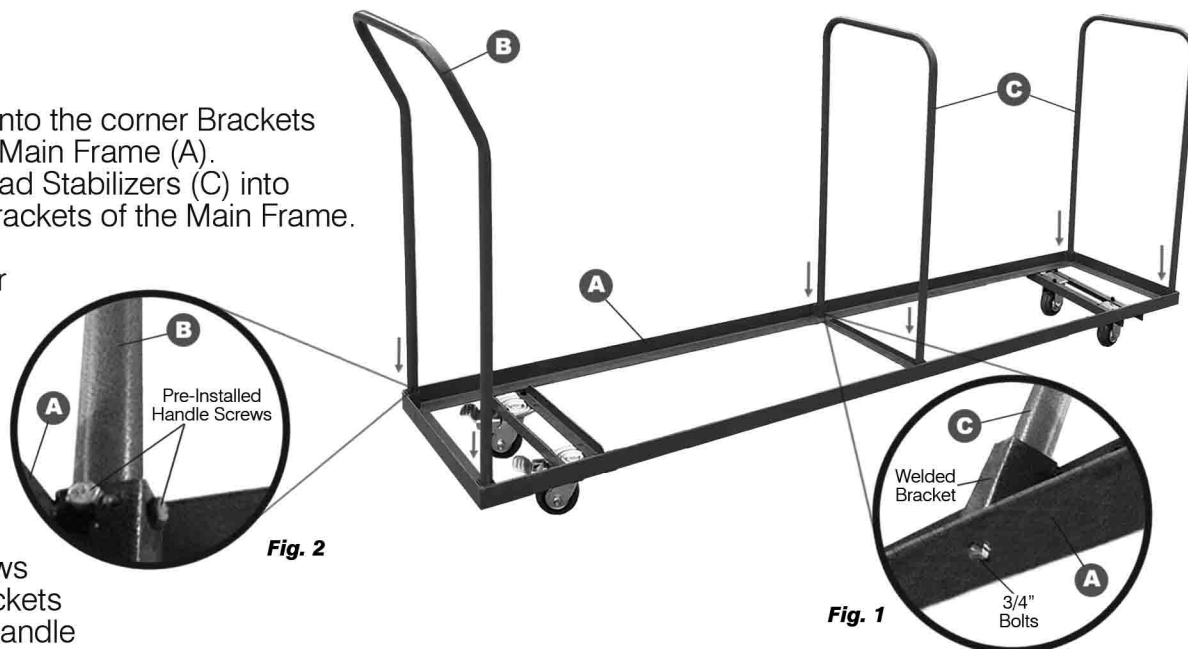
Item 710CC

Step 2

Insert Handle Bar (B) into the corner Brackets at the front end of the Main Frame (A). Then insert the two Load Stabilizers (C) into the middle and rear Brackets of the Main Frame.

Secure the Handle Bar and Stabilizers using the the 3/4" Bolt at the base of each end of the Handle Bar & Load Stabilizers. (See Fig. 1)

Tighten the two pre-installed Set-Screws in the Handle Bar Brackets into each end of the Handle to avoid rocking during use. (See Fig. 2)



Warnings:

- Always check stability before using.
- Improper assembly or loose bolts may lead to serious damage or personal injury.
- Do not stand or lean on the Dolly.
- Do not overload with more than 800 lbs.
- For use with PDG Folding Chairs only.

